

# MONTHLY MEMBERSHIP PROGRESS REPORT

District 27 D2

Results as of: 5/31/2026

GMT:

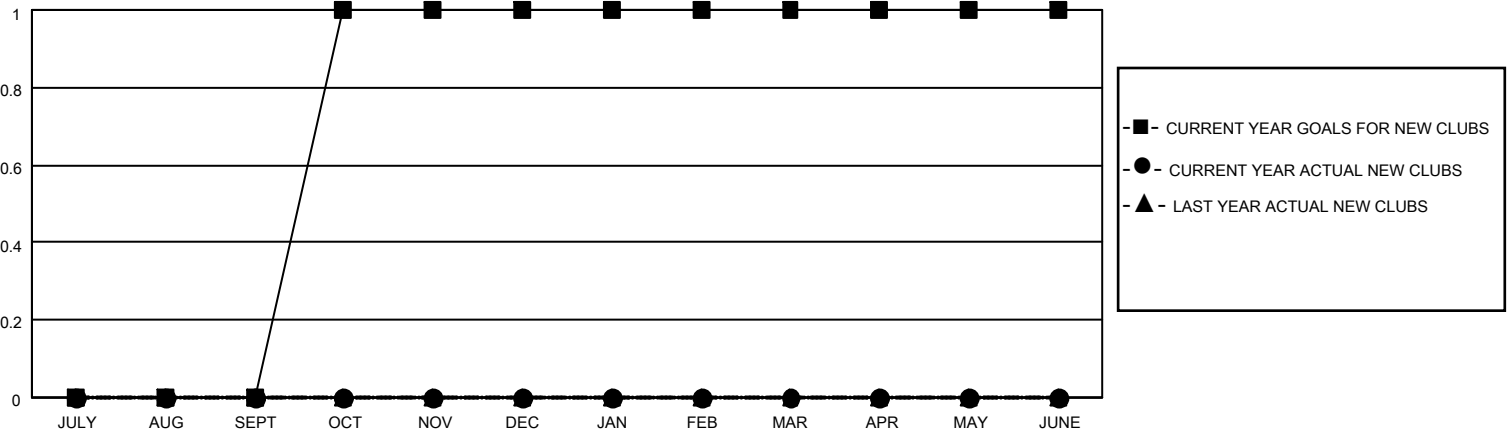
LOCATION WISCONSIN

GMT CA

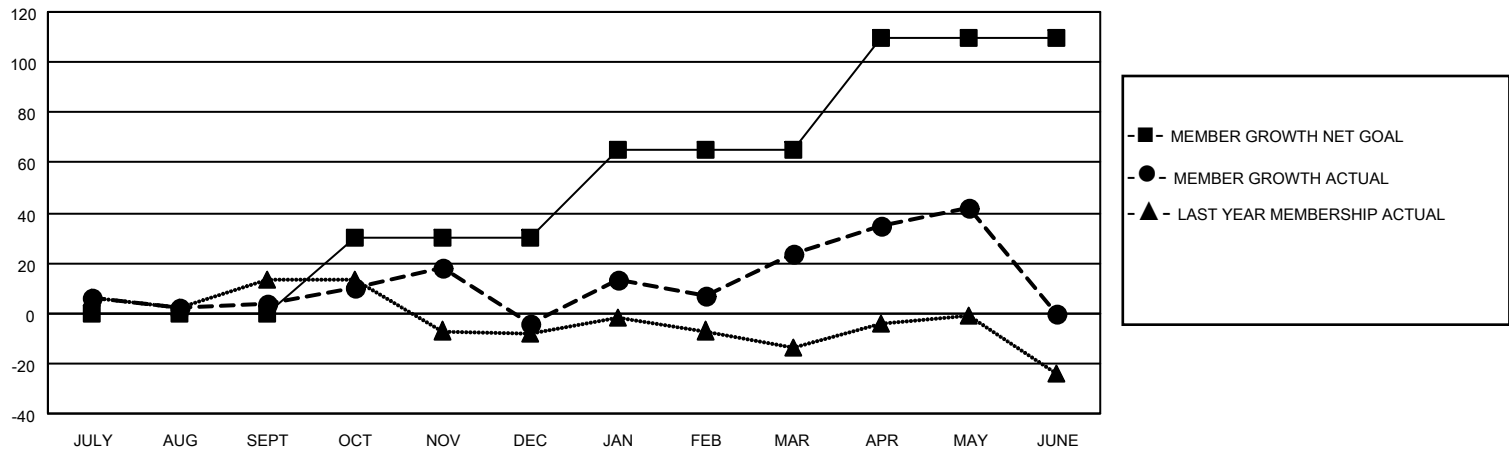
| Clubs                 |               |           |               |
|-----------------------|---------------|-----------|---------------|
| RESULTS FOR 2025-2026 |               |           |               |
| QUARTER               | NEW CLUB GOAL | NEW CLUBS | DROPPED CLUBS |
| JULY/AUG/SEPT         | 0             | 0         | 0             |
| OCT/NOV/DEC           | 1             | 0         | 0             |
| JAN/FEB/MAR           | 0             | 0         | 0             |
| APR/MAY/JUNE          | 0             | 0         | 0             |

| Members               |                        |                      |  |
|-----------------------|------------------------|----------------------|--|
| RESULTS FOR 2025-2026 |                        |                      |  |
| QUARTER               | MEMBER GROWTH NET GOAL | MEMBER GROWTH ACTUAL | DROPPED MEMBERS ACTUAL (including transfers) |
| JULY/AUG/SEPT         | 0                      | 38                   | 30   |
| OCT/NOV/DEC           | 30                     | 41                   | 45   |
| JAN/FEB/MAR           | 35                     | 78                   | 43   |
| APR/MAY/JUNE          | 45                     | 35                   | 14   |

GOALS AND ACTUAL NEW CLUBS CUMULATIVE



GOALS AND ACTUAL MEMBERS CUMULATIVE



|                        |   |                                     |
|------------------------|---|-------------------------------------|
| DROPPED CLUBS: 0       | 36 CLUBS OF 47 ADDED 1 OR MORE NEW MEMBERS                | <b>GENDER DISTRIBUTION</b>          |
|                        |   | MALE 1,096 (67.32%)                 |
|                        |   | FEMALE 531 (32.62%)                 |
| <b>DROPPED MEMBERS</b> | <a href="#">CLICK HERE FOR CUMULATIVE MEMBERSHIP DATA</a> | TOTAL FAMILY UNIT MEMBERS 436       |
| DECEASED 15            |   | FAMILY MEMBERS PAYING HALF DUES 224 |
| CLUB CANCELLED 0       |   |                                     |
| OTHER 117              |   |                                     |
| <b>TOTAL 132</b>       |   |                                     |